



Energy Efficiency Rating		Current	Potential
Very energy efficient - lower running costs			
(92 plus) A		85	85
(81-91) B			
(69-80) C			
(55-68) D			
(39-54) E			
(21-38) F			
(1-20) G			
Not energy efficient - higher running costs			
England & Wales		EU Directive 2002/91/EC	

£2,210 Per Calendar Month  
 1 Bed Apartment



**E11, E7, E12 & E15**  
 hello11@stowbrothers.com  
 0203 397 2222

**E4 & N17**  
 hello4@stowbrothers.com  
 0203 369 6444

**E17 & E10**  
 hello17@stowbrothers.com  
 0203 397 9797

**E18 & IG8**  
 hello18@stowbrothers.com  
 0203 369 1818

**E8, E9, E5, N16, E3 & E2**  
 hellohackney@stowbrothers.com  
 0208 520 3077

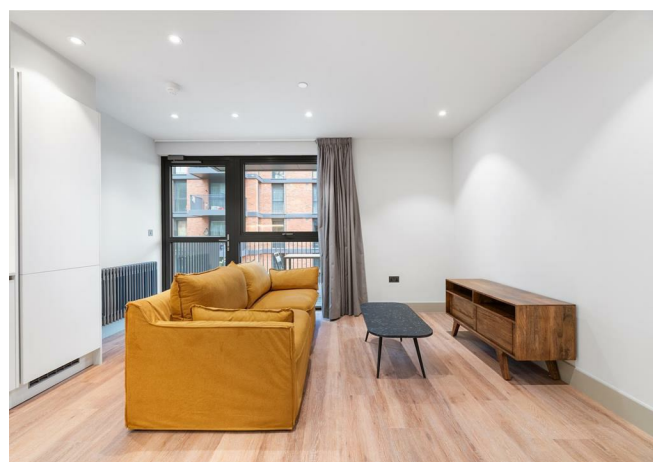
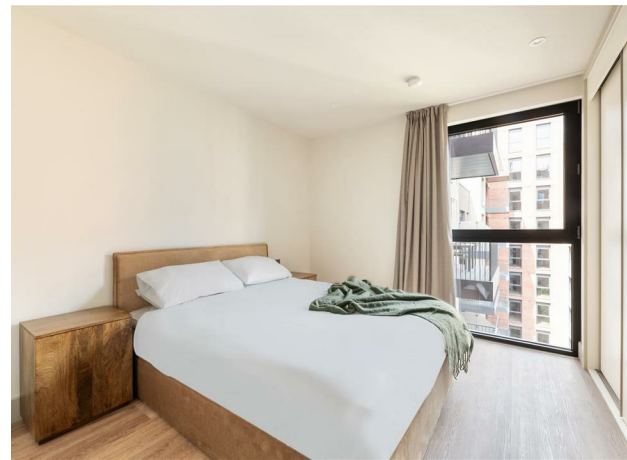
**New Homes**  
 newhomes@stowbrothers.com  
 0203 325 7227

**Investment & Development**  
 id@stowbrothers.com  
 0208 520 6220

**Property Maintenance**  
 propertymanagement@stowbrothers.com  
 0203 325 7228

STOWBROTHERS.COM  
 @STOWBROTHERS

REQUEST A VIEWING  
 0203 397 9797



#### IF YOU LIVED HERE...

Bright and spacious, every aspect of the building has been designed with modern living in mind - and not just the apartment interiors, but the communal areas too. Never has collecting the post been such a pleasure thanks to the retro-style parcel boxes, while the eye-catching flooring and dual-coloured walls will get you smiling every time you arrive home. Inside, you'll find floor-to-ceiling windows, which provide optimum natural light and create a fantastic sense of space, something the sweeping floors add to. It'll be a joy to host guests thanks to the fully-equipped kitchen, which feature Bosch appliances, sleek units, brass fittings and stylish tiling. The column radiators are stunning too. The bedrooms are just as plush as the rest of the building, with more pristine decor, while bathrooms are beautifully designed, with ample storage and stunning fittings. The two and three bedroom apartments come complete with further en suites, and all apartments have built-in storage. When the sun is shining, you'll want to make the most of the private balcony, but for a chance to get to know the

Sessile community, head over to the roof terrace. Planters are built in beside the striped banquettes, so screening is supplied by lush palms and fiddle leaf figs. Exceptional views over Tottenham take in the crest of the stadium and the open green space of Down Lane Park. The vinyl room next door is a music lovers mecca, with a vast record collection ready to spin as well as a table tennis table and hideaway television. Also on this floor is a yoga studio, where every resident can enjoy a complimentary class each week. You'll also have much appreciation for the orangery, a sunlit atrium that unfolds around a retro tiled hearth on the tenth floor. With chandeliers overhead and plush rugs underfoot, residents can sink into an armchair by the fire, or set up shop for the day on a shared table with plenty of plug sockets. Designed to flex for every need, this space can be connected to a commercial-grade chef's kitchen and table, expertly kitted out for caterers or big names stopping by to run a supper club. A range of private dining rooms on this floor are bookable for birthdays and gatherings that require a little extra fanfare.



#### WHAT ELSE?

- Fancy a caffeine fix? Stroll ten minutes to Table13, a bakery, café and wine bar which serves outstanding coffee, homemade bread, pastries and sandwiches. By night it offers wine by the glass, paired with delicious small plates..
- Transport is plentiful in this area with some excellent bus routes nearby, as well as a great cycling infrastructure. Even better, the building has bike storage, so getting out and about will be a doddle.
- You're fantastically placed for reaching other neighbourhoods, with both Walthamstow and Stoke Newington a short stretch away. As for getting further beyond, Kings Cross is just thirteen minutes away direct via the speedy Victoria line, with Oxford Circus and the West End just three minutes further.
- Of course, thanks to the onsite gym you can get in some workout time without the commute there eating into your (now very active) social life. This spacious, air-conditioned space on the ground floor has all the equipment you'd expect from a top facility, so forget queuing for a lone treadmill or tussling over a few free weights.
- As for the surrounding area, it's one thing nipping to this part of north London as a visitor, but it's quite enough to live and breathe the scene, with everything from dynamic breweries and coffee shops to sprawling greenery and award-winning restaurants on your doorstep. Since this whole area is undergoing a complete regeneration, it's hard to keep up with all the exciting new businesses emerging, so you'll enjoy exploring.
- For more greenery theres Walthamstow Wetlands, a peaceful nature reserve which covers more than two hundred acres of Thames Water reservoir.

REQUEST A VIEWING  
0203 397 9797

FOLLOW US ➔ @STOWBROTHERS  
STOWBROTHERS.COM



REQUEST A VIEWING  
0203 397 9797

FOLLOW US → @STOWBROTHERS  
STOWBROTHERS.COM



REQUEST A VIEWING  
0203 397 9797

FOLLOW US → @STOWBROTHERS  
STOWBROTHERS.COM